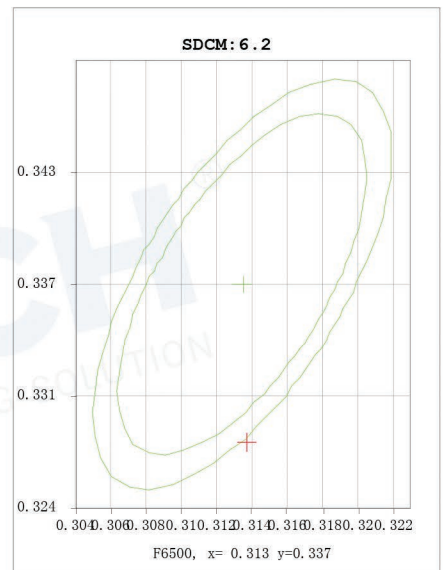
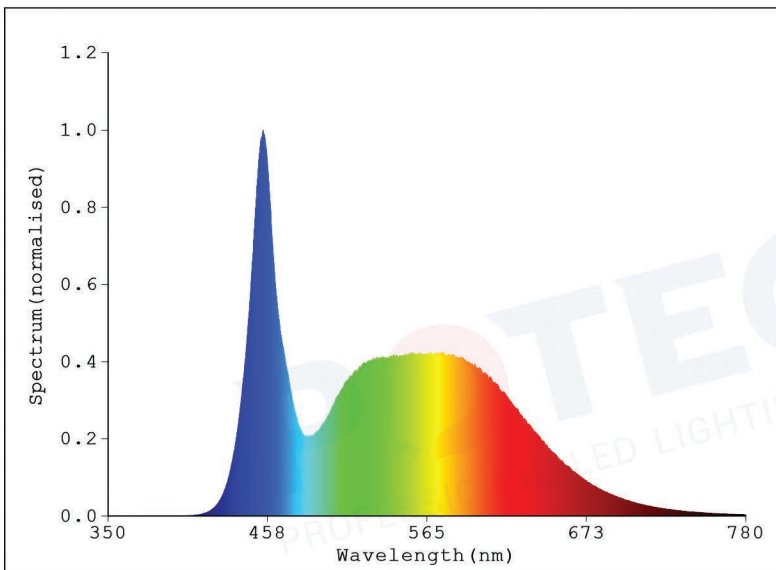


Spectrum Test Report

NAME: LED PT HBL2 80N	TYPE: CCT	WEIGHT:
DIM.: 130	SPEC.:	SERIAL No.:
MFR.: LAB VILAS 317		



Color Parameters:

Chromaticity Coordinates: $x=0.3133$ $y=0.3280$ / $u'=0.1986$ $v'=0.4679$ $duv=0.00238$
 $T_c=6482K$ Dominant WL: $L_d=488.2nm$ Purity=7.2%
 Ratio: R=13.7% G=80.6% B=5.7% Peak WL: $L_p=454.6nm$ HWL: 21.3nm
 Rendering Index: $R_a=83.9$ TLCI = 70
 R1 =83 R2 =90 R3 =92 R4 =82 R5 =82 R6 =84 R7 =88
 R8 =70 R9 =11 R10=74 R11=81 R12=55 R13=85 R14=96 R15=79
 $E = 48.50 lx$ $E_e = 0.1567 W/m^2$

Status: $T=9.00ms$ $I_p=49475 (75\%)$ [HAAS-2000A (CAN)]

Tester: GONIOPHOTOMETERS
 Temperature: 25.2 Deg
 Manufactory: LAB VILAS

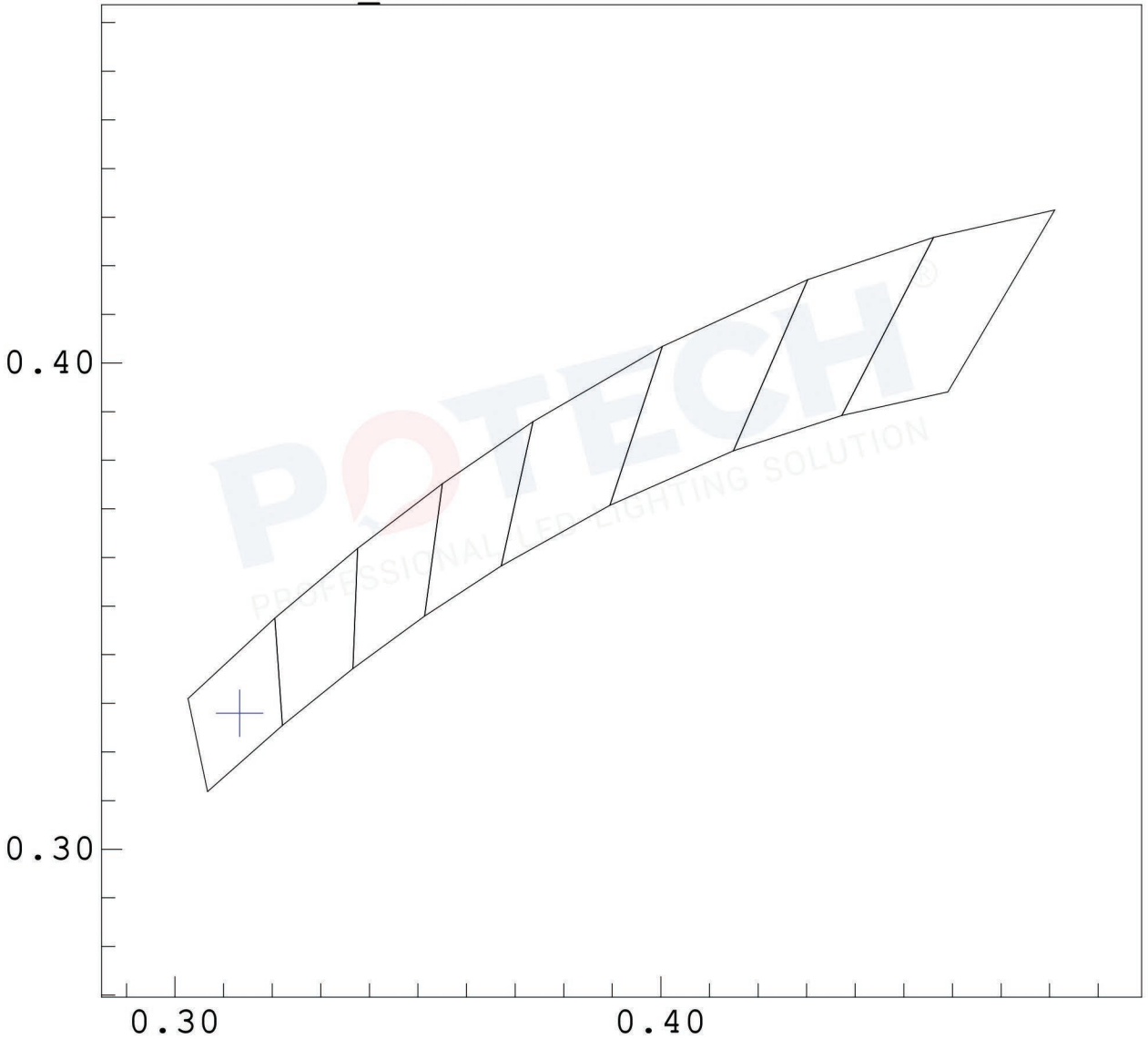
Date:
 Humidity: 61%
 Remarks: 1143-POTECH-2023

System: HAAS-2000A (CAN)

Standard: ANSIC78-377_White_2015.WCL

CIE x,y: x = 0.3133 , y = 0.3280

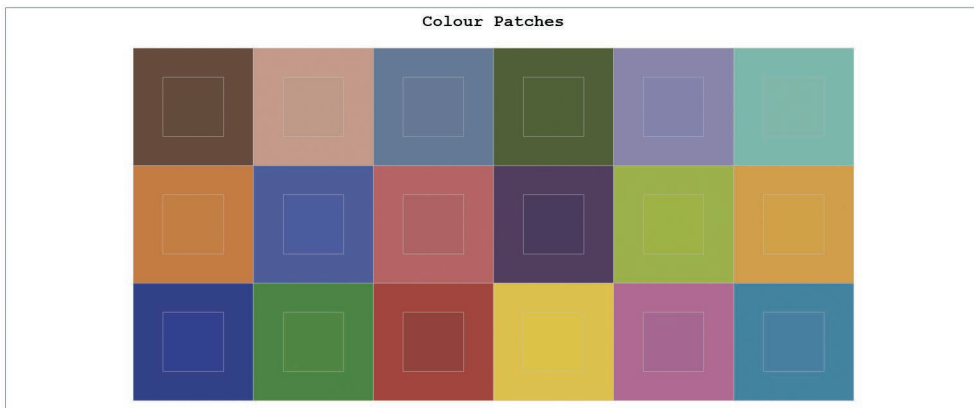
CLASS: ANSI_6500K



Tester:GONIOPHOTOMETERS
Temperature:25.2Deg
Manufactory:LAB VILAS 317

Date:
Humidity:61%
Remarks:1143-POTECH-2023

System:HAAS-2000A (CAN)



Colourist's Advice Report

Sector	Lightness	Chroma	Hue
R	-4	-3	-1
R/Y	0	-1	3
Y	1	1	3
Y/G	1	1	0
G	1	0	-2
G/C	0	0	-1
C	0	-1	-1
C/B	-2	1	5
B	-1	2	1
B/M	-2	-1	-4
M	-3	-1	-4
M/R	-5	-1	-4

